

The background of the entire page is a photograph of a large industrial conveyor belt system. The conveyor belt is dark and runs diagonally from the top left towards the middle right. It is supported by a complex metal structure of grey beams. In the background, there are several large red cylindrical components, likely part of a washing or sorting process. The sky is a clear, light blue. In the top left corner, the logo for MWS Equipment is displayed. The logo consists of the letters 'MWS' in a large, bold, white sans-serif font. To the right of 'MWS' are two squares: a smaller grey one above a larger red one. Below 'MWS' is the word 'EQUIPMENT' in a smaller, white, all-caps sans-serif font.

**MWS**  
EQUIPMENT

A vertical red bar is positioned to the left of the main text, starting from the middle of the page and extending downwards.

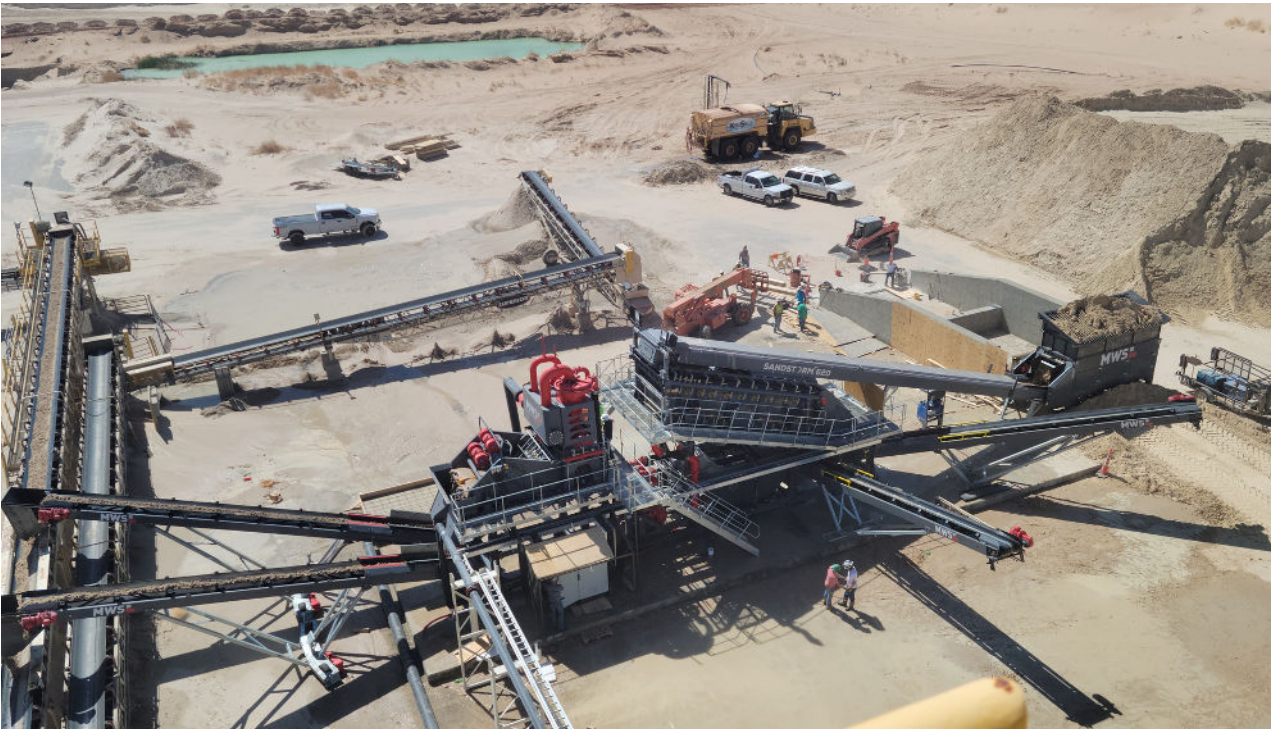
# C&D WASTE RECYCLING

SMARTER WASHING SOLUTIONS

[www.mwswashing.com](http://www.mwswashing.com)

# ABOUT MWS

We are focused on delivering the highest quality, and most efficient products to our customers.



MWS Equipment is a leading player in providing equipment to the materials, mining and minerals industry. We are renowned for developing class-leading innovative and efficient product equipment to assist customers in meeting their requirements.

Formed in 2016, we have continuously designed and manufactured high quality wet processing equipment. As a company with a rich heritage, our mission is to be the leading provider of reliable and highly productive equipment to the Materials and Minerals Washing industry.

In addition, we offer solutions to the global market of construction and demolition waste recycling. We have seen great success in turning waste in to valuable, sellable products for customers all over the world while striving to create a sustainable and circular economy.

# WHY RECYCLE C&D WASTE? ▶▶▶▶▶▶



1. **REDUCES WASTE SENT TO LANDFILLS**
2. **PREVENTS POLLUTION**
3. **CONSERVES ENERGY & NATURAL RESOURCES**
4. **CREATES JOBS & MORE ECONOMIC BENEFITS**
5. **WASHED MATERIAL CAN OFFER HIGH-SPEC SOLUTIONS**
6. **HELPS TO CREATE A CIRCULAR ECONOMY**

# CONSTRUCTION & DEMOLITION WASTE



## Recycling Process

**Historically, oversize C&D waste is crushed, sized, and then can be used for low grade applications or backfilling. MWS Equipment offer solutions to retain the original value of the material.**



The material will enter a Scalper, where some of the oversized material is removed. This oversized material can then be crushed to re-enter the scalper or used for other purposes. By using an overband magnet, metals in the material can be removed at this stage. All the undersize material will then be fed to a rinsing screen where the sand is removed (0-4mm).

The remainder of the aggregate enters the logwasher where it is scrubbed using blades and (through attrition), unwanted dirt and clay particles are removed. At this stage, any debris or organics will also be floated off, leaving behind a clean aggregate. The aggregate then passes to a post-screen where it is sized by fractions depending on customer needs

The removed sand from the initial screening process will pass through a cyclone to remove silt before it is dewatered and ready for market. In total, a customer could get up to 5 clean, high-quality products ready for market.

# CONSTRUCTION & DEMOLITION WASTE



## Recycling Process

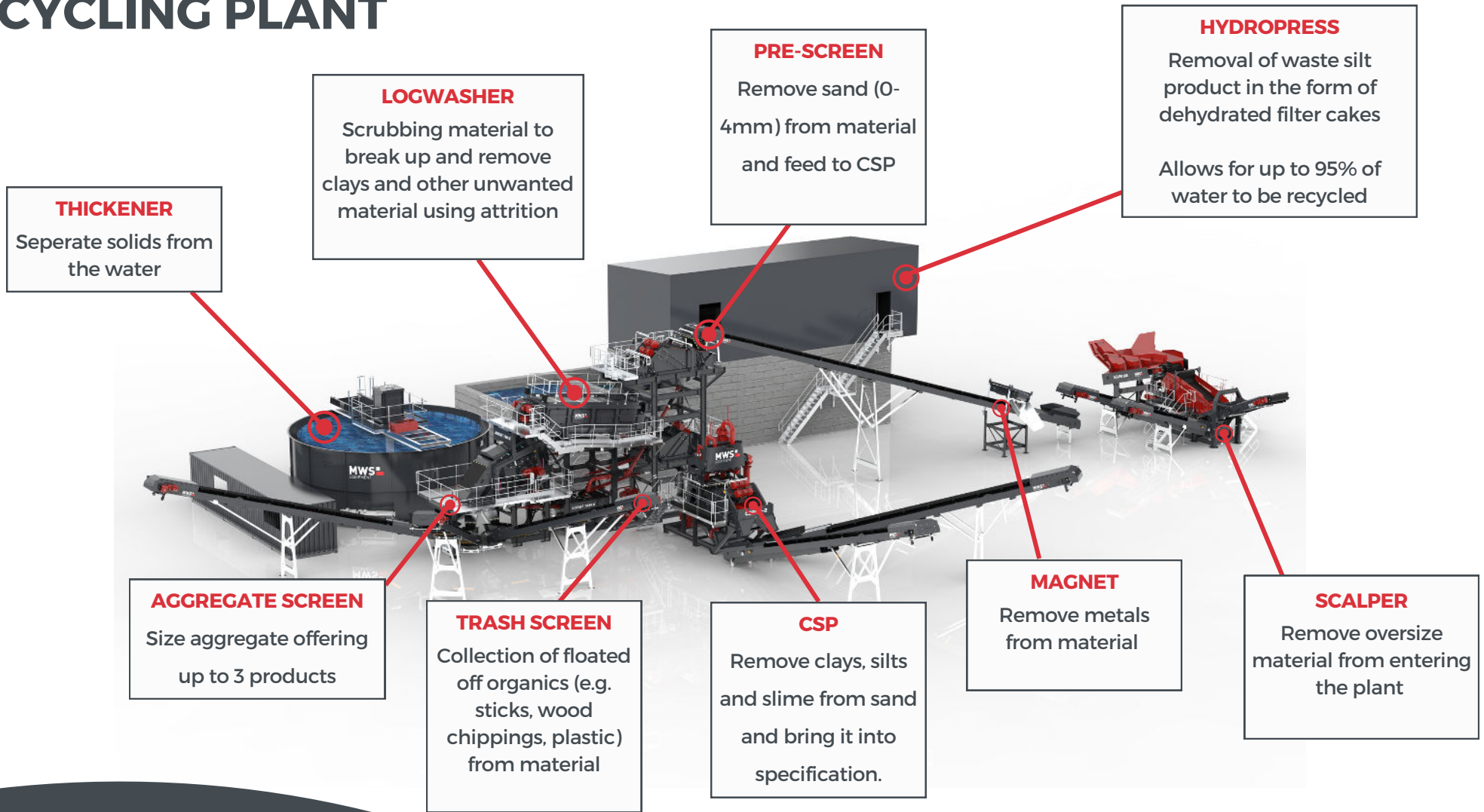


The overflow from the CSP cyclone then passes to the thickener tank where flocculant is added. This results in rapid settling of the solids within the thickener and leaves clean, recycled water on top which is moved to the clarified water tank for immediate re-use.

The settled solids at the bottom of the thickener tank are then pumped to a sludge tank, before finally passing to the filterpress.

Using a process of pressure filtration, the water is removed from the slurry within the filter press allowing up to 95% of water to be recycled. Remaining is dehydrated filter cake which is released by the filter press plates. This can be seen as a waste product.

# C&D WASTE RECYCLING PLANT



# MACHINE OVERVIEW



<b>SCALPING</b>	<b>SCLPR 105</b>	<b>SCLPR 155</b>
<b>SCRUBBING</b>	<b>Aggstorm 8 / 15 / 15XL</b>	<b>Coarse Material Washer</b>
<b>SCREENING</b>	<b>Pre-screen (various sizes available)</b>	<b>Aggregate Screen (various sizes available)</b>
<b>WATER RECYCLING</b>	<b>Hydropure (various sizes available)</b>	
<b>WASTE REMOVAL</b>	<b>Hydropress (various sizes available)</b>	



# SMARTER WASHING SOLUTIONS

47 MOOR ROAD, COALISLAND, CO. TYRONE,  
BT71 4QB, N. IRELAND

T: +44 (0) 28 87 740 926

F: +44 (0) 28 87 747 242

E: SALES@MWSWASHING.COM

W: MWSWASHING.COM

A METSO:OUTOTEC BUSINESS